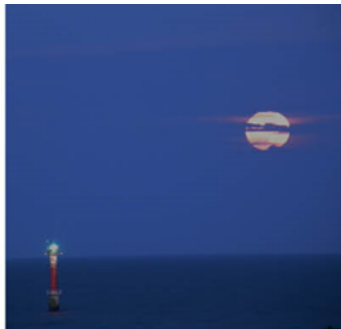


Swedish Maritime Administration

Johan Lantz

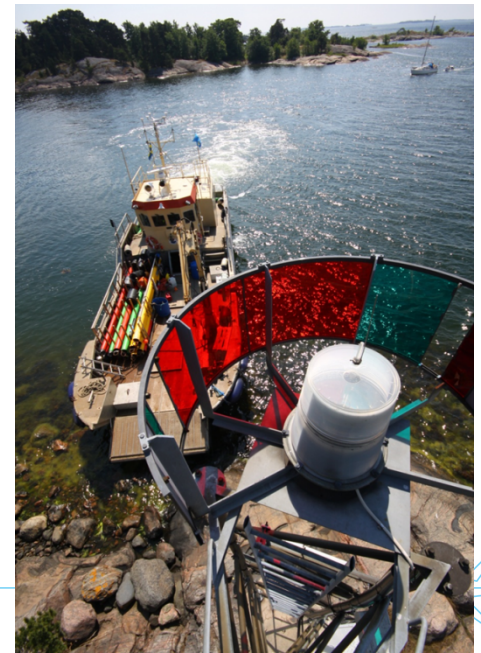


The Swedish Maritime Administration is a government agency that is tasked to provide resources for high security and good accessibility. The Swedish Maritime Administration activities are fairways, icebreaking, hydrographics, pilotage, navigation information, sailor service and maritime and aeronautical search and rescue.



Major maritime infrastructure projects in Sweden

- Luleå Fairway Project – Bay of Botnia
- Trollhätte canal Project – Inland Waterways
- Lake Mälaren Project – Inland Waterways



Luleå – The Iron Ore Port

LULEÅ HAMN
PORT OF LULEÅ - SWEDEN



Samfinansierat av EU
Transeuropeiska transportnätet (TEN-T)



TRAFIKVERKET



LULEÅ KOMMUN



Luleå Fairway Project - Background

- LKAB iron ore is important for the internal EU-market – 90%
- Increased annual volume via port of Luleå
- From 9 to 20 million tonns/year – 2030
- Limited rail capacity Kiruna – Narvik
- Port of Luleå – Today 11 meters draught
- Vessel & navigation restrictions
- SECA-regulation - Driver for bigger vessels



Luleå fairway project

- Increased draught - 15 meters - Baltic Sea max
- Dredging volume apx. 20 million m³
- New logistics solutions in the port area and in railway connection
- Estimated budget: EUR 230 Million
- Construction period 2016-2018
- In operation 2018-2019?

