



PORT SZCZECIN-ŚWINOUJŚCIE

Szczecin-Świnoujście

A universal port complex in the Baltic Sea area



Szczecin, 14.09.2017



PORT SZCZECIN-ŚWINOUJŚCIE

Szczecin and Świnoujście as one port complex

Total quay length:

2016 – 14.0km

2020 – 15.4km

Max depth:

Świnoujście

2017 – 14.2m

2020 – 14.5m

Szczecin

2017 – 10.5m

2020 – 12.5m

Cargo handling potential:

2016 – 29.7 mio. t

2020 – 42.9 mio. t

Investment value:

2007-2020: EUR 490 mio.

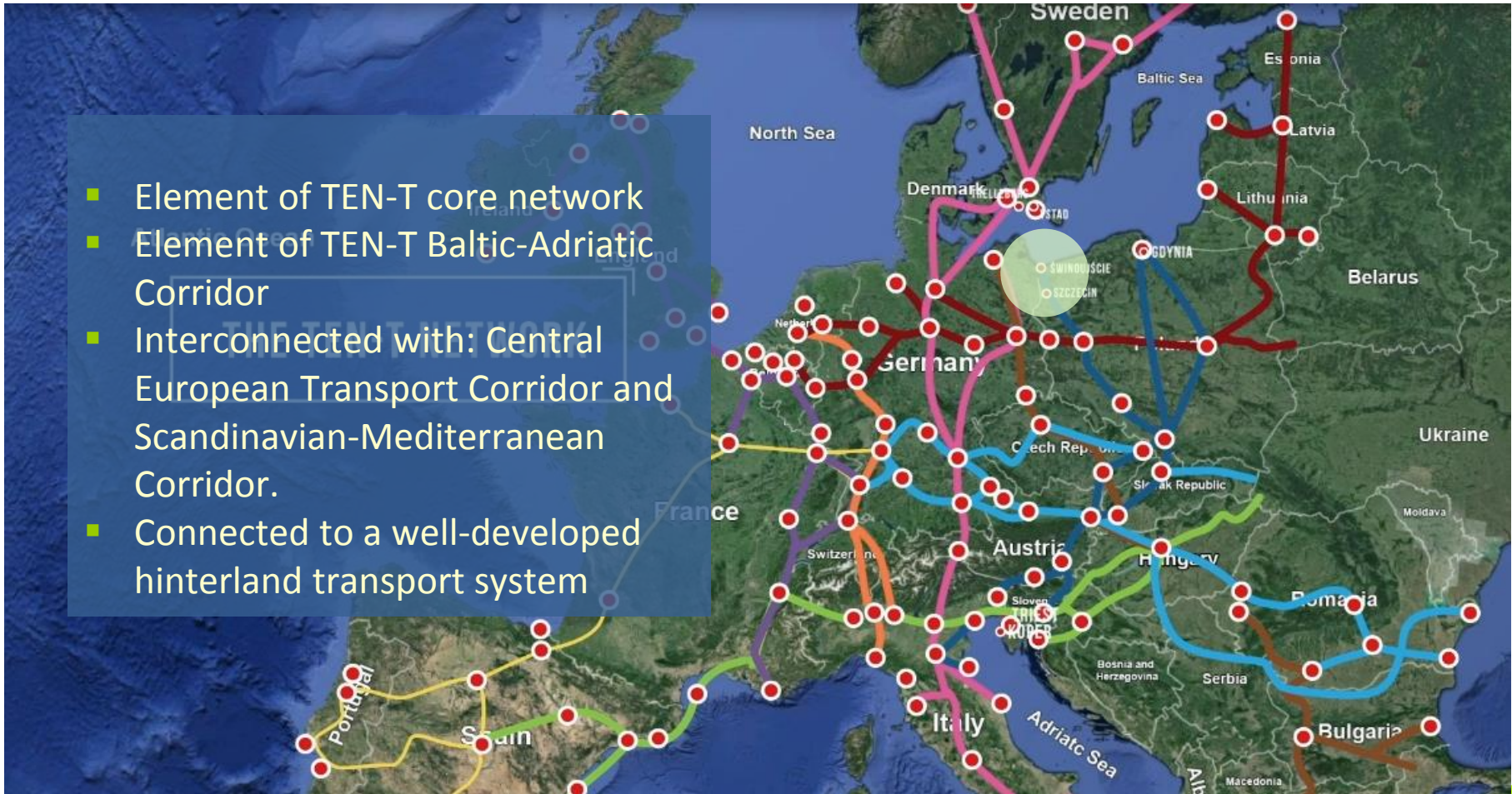




PORT SZCZECIN-ŚWINOUJŚCIE

Part of the integrated transport systems

- Element of TEN-T core network
- Element of TEN-T Baltic-Adriatic Corridor
- Interconnected with: Central European Transport Corridor and Scandinavian-Mediterranean Corridor.
- Connected to a well-developed hinterland transport system



Part of the integrated transport systems

Our hinterland:

- South-Western Poland
- Eastern Germany
- Czech Republic
- Slovakia
- Hungary
- Austria



- The shortest route from Scandinavia to Central and Southern Europe and convenient location on the sea route between FI, RU and western Europe.
- Ports Szczecin-Świnoujście have access to the well-developed hinterland transport system, of the TENT-T network and its corridors: Baltic-Adriatic Corridor and Central European Transport Corridor.
- Convenient location for maritime services to Berlin and Brandenburg region (DE). The distance between Szczecin (PL) and Berlin (DE): only 140 km



PORT SZCZECIN-ŚWINOUJŚCIE

Effective access to the ports by 2020



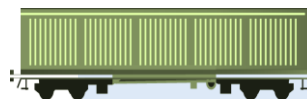
- 12,5m - Szczecin
- 17,0 m - Świnoujście



- IV class of navigability for Odra river
- Vb class for inland waterway Szczecin-Berlin
- Inland waterway connection Odra-Dunaj



- Road access to both ports
- S3



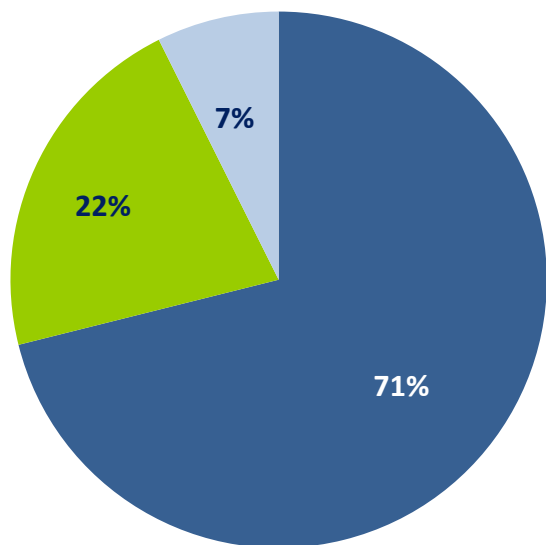
- Railway access to both ports
- CE 59 and E59



PORT SZCZECIN-ŚWINOUJŚCIE

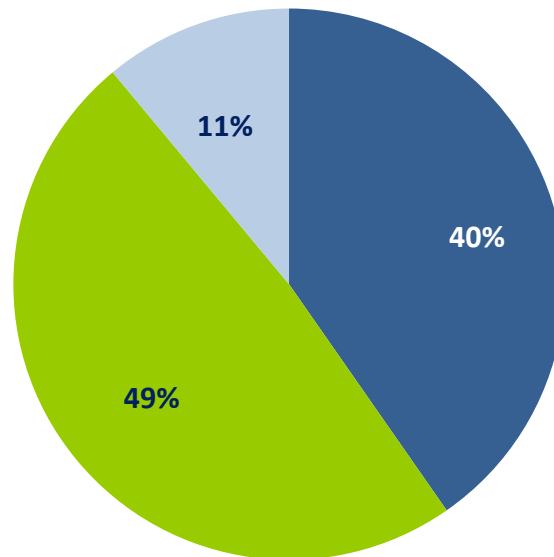
From bulk cargo to universal port complex

1991



■ Dry bulk
■ General cargo
■ Liquids

2016

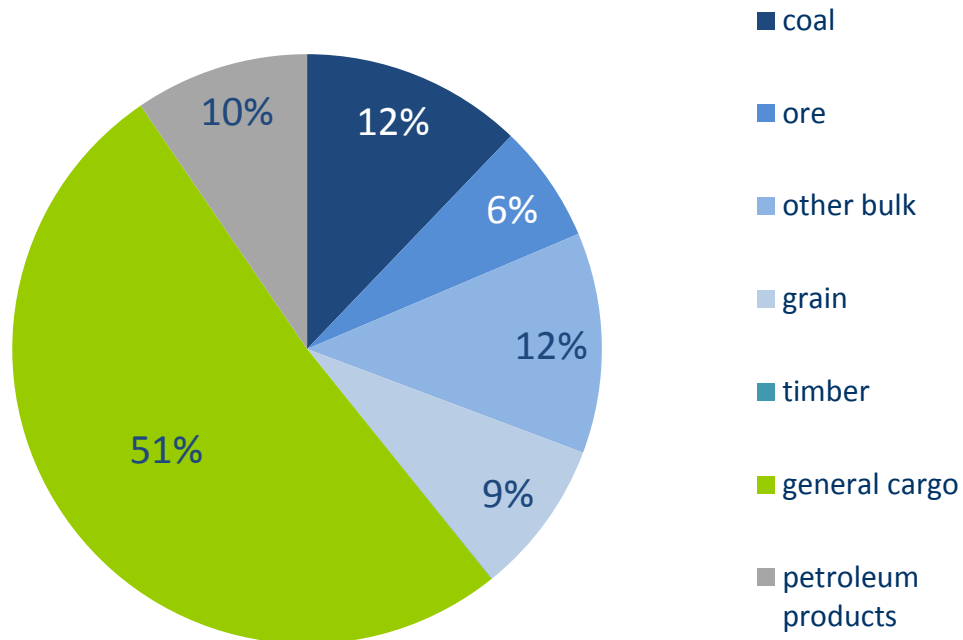


Total **2016**: 24.1 mio. tons

Total **2027**: 42 mio. tons

Development of cargo potential in the ports Szczecin-Swinoujście

Turnover, 2016



Total in **2016**: 24.1 mio. t.

Total in **2027**: 42 mio. t.

Attractive investment areas – ready for your business

The Ports Authority is ready to offer to potential investors the development areas which are clear from a legal and formal point of view, equipped with full technical infrastructure and ready for investments in logistic activity, cargo handling and storage facilities or port related industry.

140 ha



Świnoujście

Outer port

Szczecin

Ostrów
Grabowski

Ostrów
Mieleński



Development is our goal – better infrastructure at your service

- ◀ Developing the port infrastructure
- ◀ New quays
- ◀ New terminals
- ◀ New roads, new parking places, new rail tracks
- ◀ Increasing the cargo handling capacity
- ◀ Increasing the navigability of the Odra River – including 12,5m for Szczecin
- ◀ Improving port access from the hinterland



Development is our goal – better infrastructure at your service

Investments::: UE 2007-2013



Development is our goal – better infrastructure at your service

Investments::: UE 2014-2020



Development of investment areas at Ostrow Grabowski in Szczecin

- Total area: 170 ha
- Different grade of land development.

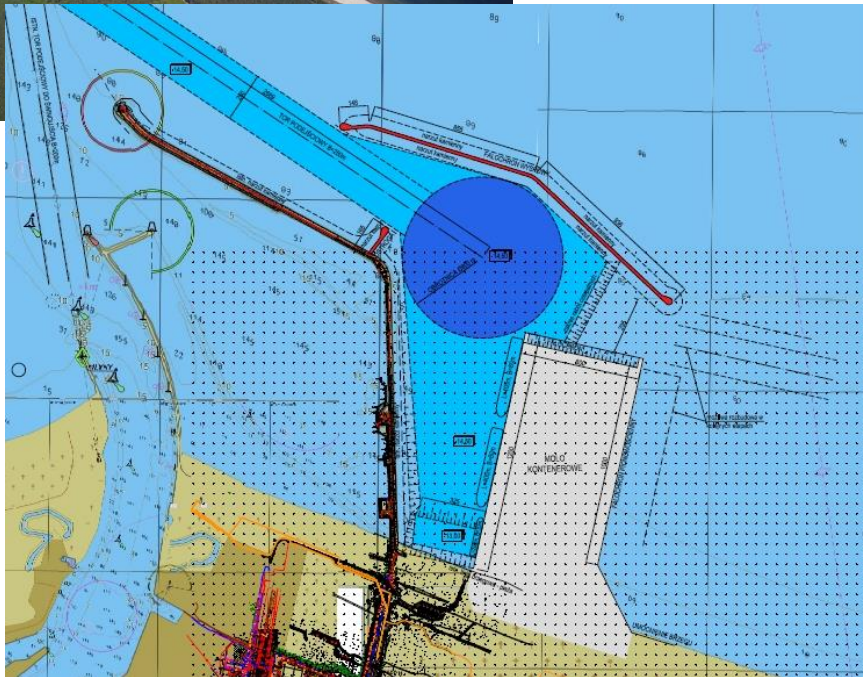


- **3 new quays** on the western side of the Ostrów Grabowski Peninsula – dedicated to handling of **general cargo** (containers, conventional cargo and heavy lift products).
- **3 new quays** for **bulk cargo** on the eastern side.
- **25 ha** in the central part for **port-related industry**.



PORT SZCZECIN-ŚWINOUJŚCIE

Development of investment areas of outer port in Świnoujście



- Location: east of the outer port in Swinoujscie
- Hub-terminal – possibility of service ocean-going vessels
- The target annual capacity of **1.5 million TEU**
- Capital expenditures of abt. **2.3 billion PLN.**



PORT SZCZECIN-ŚWINOUJŚCIE

Become our client - they've already trusted us:

Unifeeder

Teamlines

CMA-CGM

Transatlantic

OOCL

Containerships

Seago Line

Fast Lines

Nor Lines

Silver Green

Tschudi Logistics

iLogBaltic

Wagenborg Shipping

Rova Maritiem

Eimskip Island

Lorentzens Rederi

AtoB@Sgipping

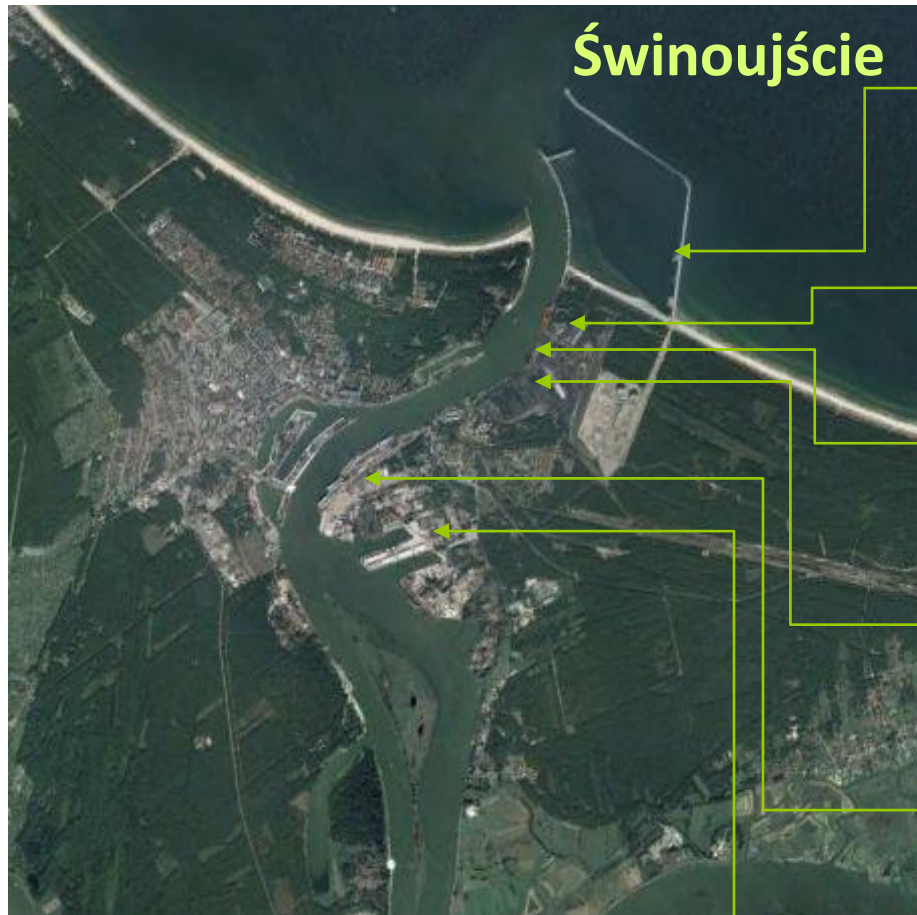
TT-Line

Polferries

Euroafrica

Unity Line

Your cargo can be served by:



LNG
terminal



Liquid
terminals



Grain
terminal



Bulk
terminal



Ferry
terminal



General
cargo
terminal





PORT SZCZECIN-ŚWINOUJŚCIE

Your cargo can be served by:



Szczecin



Grain
terminals



General
cargo
terminals



Liquid
terminal



Bulk
terminals





PORT SZCZECIN-ŚWINOUJŚCIE

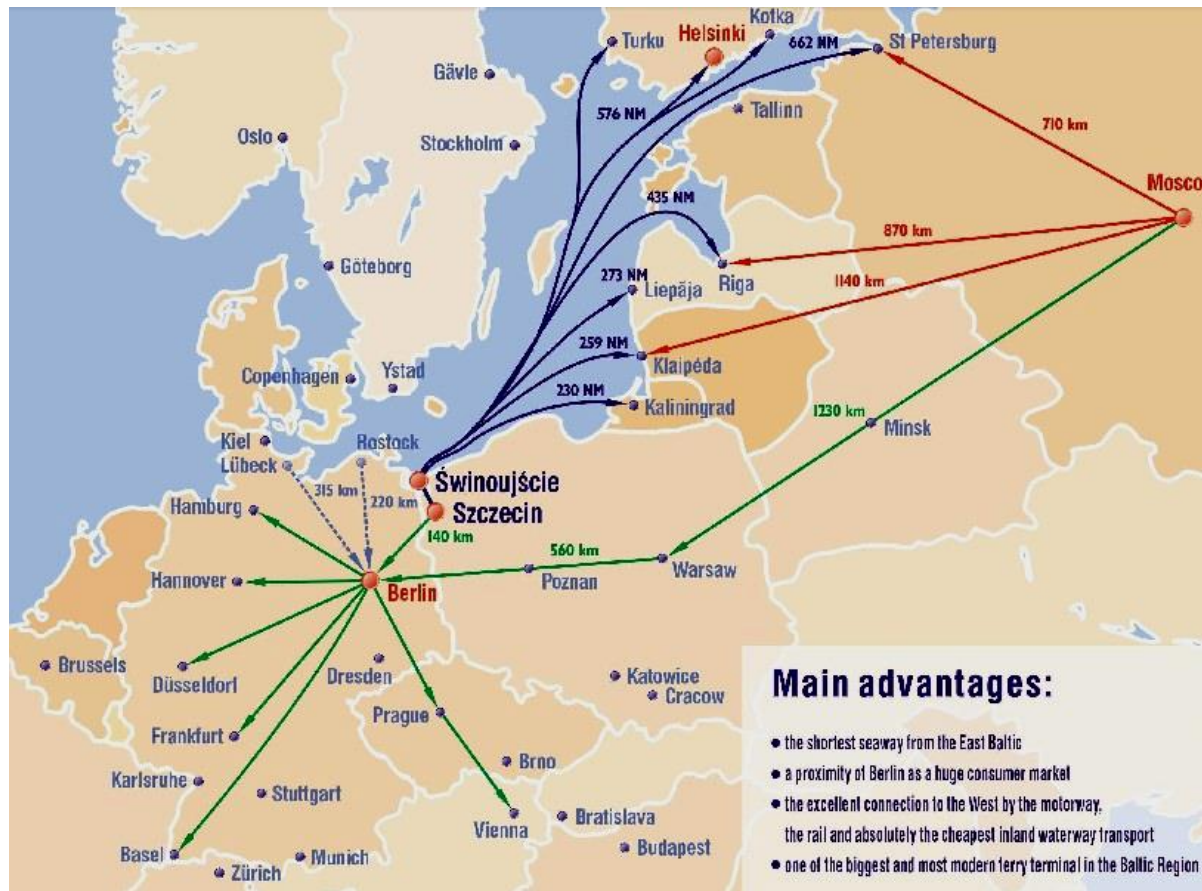


our experience
- cooperation with Finnish market



PORT SZCZECIN-ŚWINOUJŚCIE

The shortest route from Russia and Finland to Germany

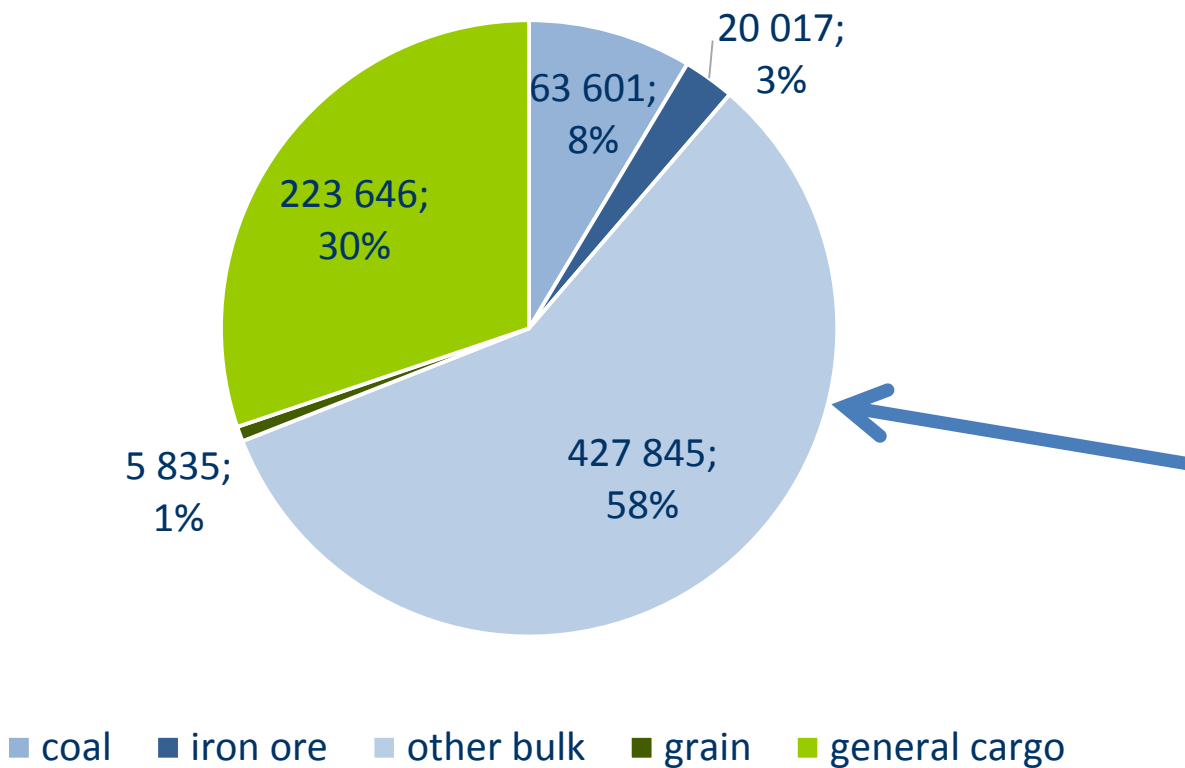




PORT SZCZECIN-ŚWINOUJŚCIE

Handling of cargoes to/from Finland via Ports Szczecin-Świnoujście in 2016

740 944 tones in 2016

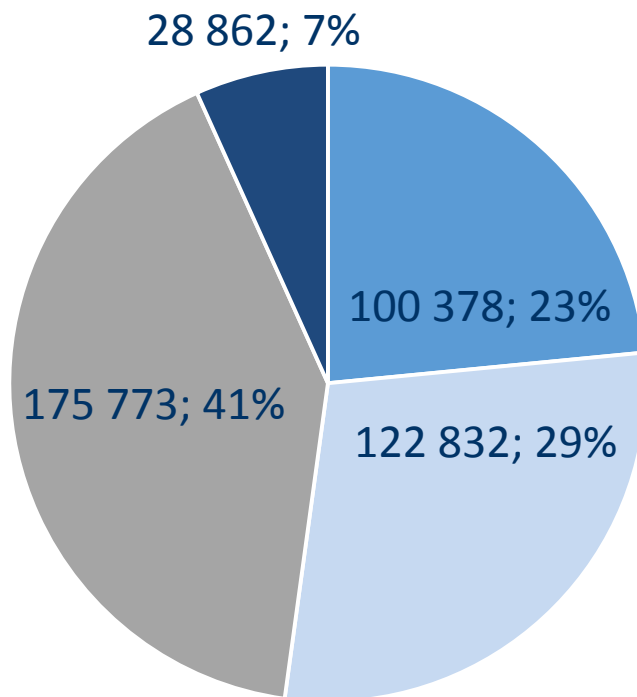




PORT SZCZECIN-ŚWINOUJŚCIE

Handling of cargoes to/from Finland via Ports Szczecin-Świnoujście in 2016

Other bulk: 427 845 tones in 2016



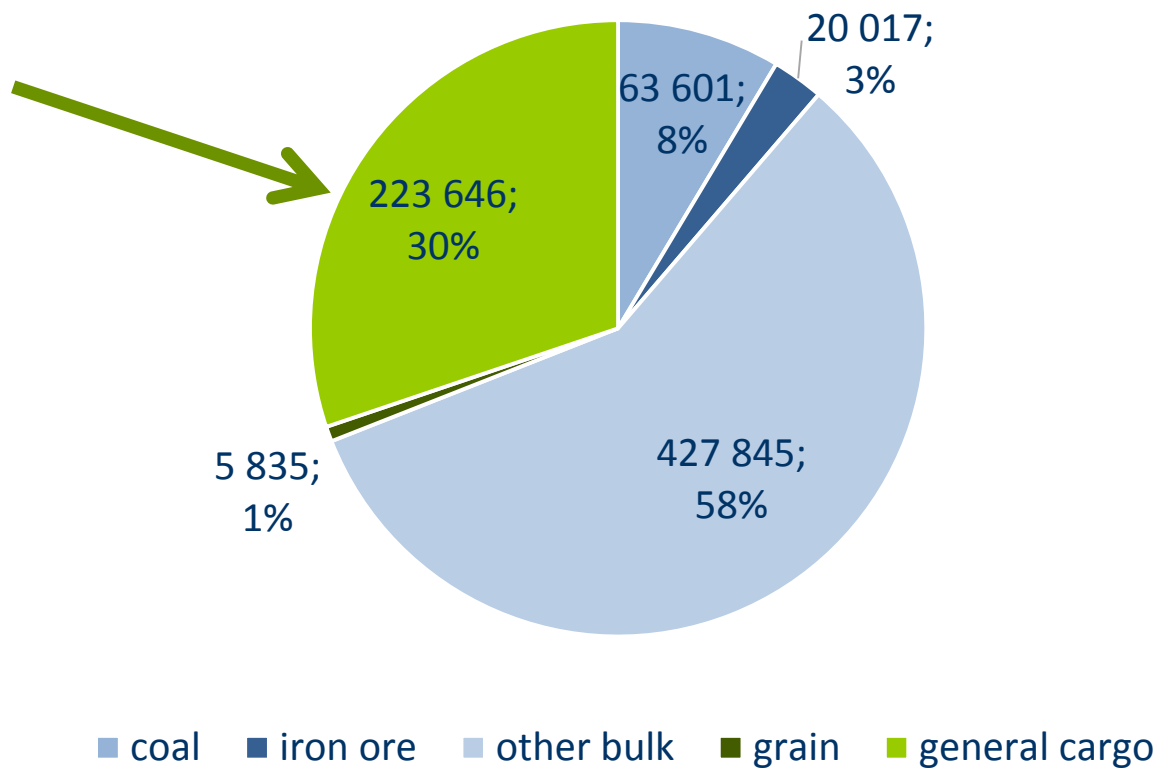
■ methanol ■ fertilizers ■ scrap ■ gypsum



PORT SZCZECIN-ŚWINOUJŚCIE

Handling of cargoes to/from Finland via Ports Szczecin-Świnoujście in 2016

740 944 tones in 2016

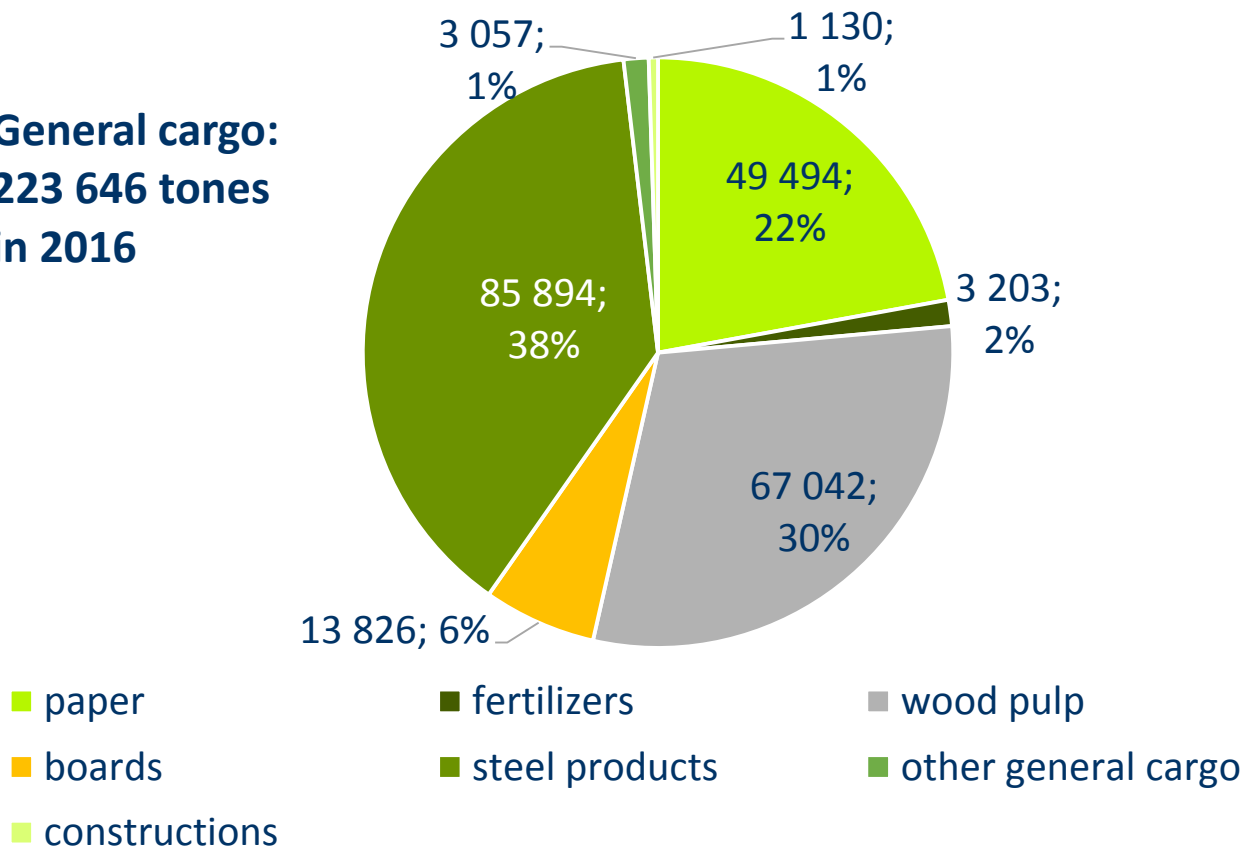




PORT SZCZECIN-ŚWINOUJŚCIE

Handling of cargoes to/from Finland via Ports Szczecin-Świnoujście in 2016

**General cargo:
223 646 tones
in 2016**



Port Szczecin-Świnoujście

**at the center of attention
in the center of Europe**

Szczecin and Świnoujście Seaports Authority

Bytomska 7 St., 70-603 Szczecin, PL

Tel. +48 91 430 82 21

Fax: +48 91 462 48 42

www.port.szczecin.pl

info@port.szczecin.pl